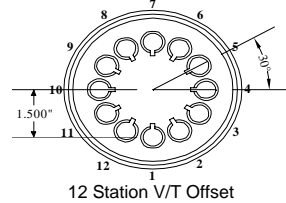
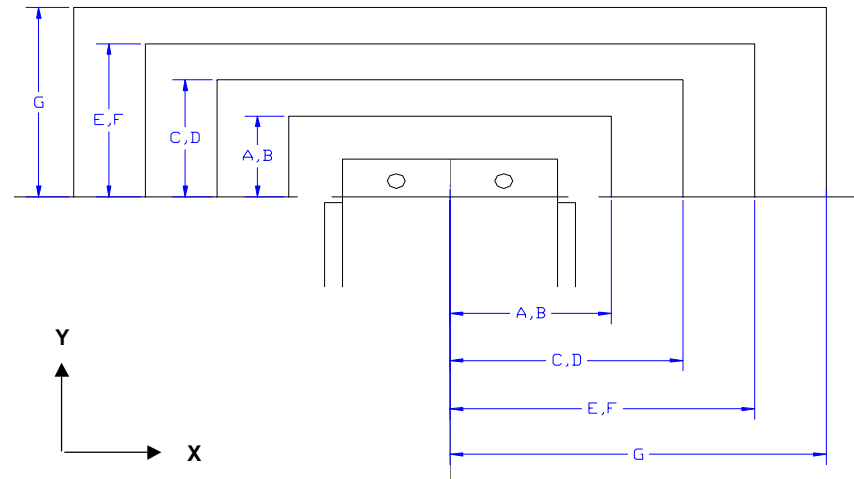
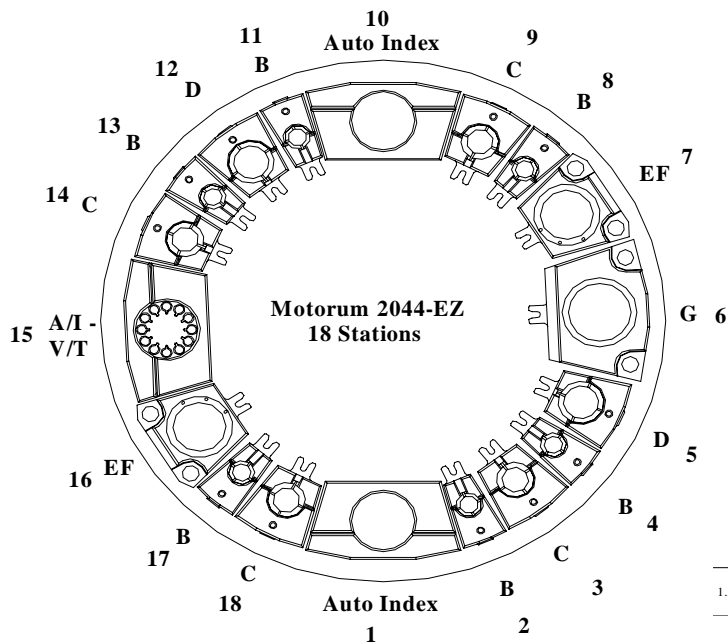


Max Station Range	A	B	CD		EF		G	VariTool Auto Index	
Act. Station Range			C	D	E	F		F Sta. A/I, VT Ready	VARITOOL
No. of Stations	0	6	4	2	1	1	1	2	1
Round/Obround	.5" & Under	1" & Under	Over 1" to 1.500"	Over 1-1.5" to 2.00"	Over 2.00" to 2.500"	Over 2.50" to 3.00"	Over 3.00" to 3.500"	3.00" Max. Diagonal	12 Station 1/2" Maximum Diameter or Diagonal
Square	N/A	.625" & Under	Over .625" to .875"	Over .875" to 1.250"	Over 1.250" to 1.625"	Over 1.625" to 2.00"	Over 2.000" to 2.250"		
Rectangle	N/A	.875" Max Across Corners	1.219" Max Across Corners	1.750" Max Across Corners	2.250" Max Across Corners	2.875" Max Across Corners	3.125" Max Across Corners		
Punch Holder O. D.	2.250"	2.250"	3.125"	3.375"	4.562"	4.562"	5.938"	4.172"	4.172"
Die Holder I. D.	1.562"	1.562"	2.250"	2.750"	3.500"	4.000"	4.500"	4.000"	N/A



Safety Zones:	X	Y	Tonnage Limits:	
AB	+/-2.756"	1.575"	Machine:	22
CD	+/-3.307"	2.126"	Auto Index:	16.5
EF	+/-3.898"	2.717"	Vari-Tool:	5
G	+/-4.606"	3.425"		

Machine Center Line

Load Position: X49.213 Y50.394 M30  
 Over Travel: X = +/- 0.984" (25mm)  
 Y = + 1.968" (50mm)  
 Y = - 0.197" (5mm)

Throat Depth: 51.181" (1300mm)

