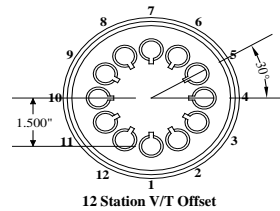
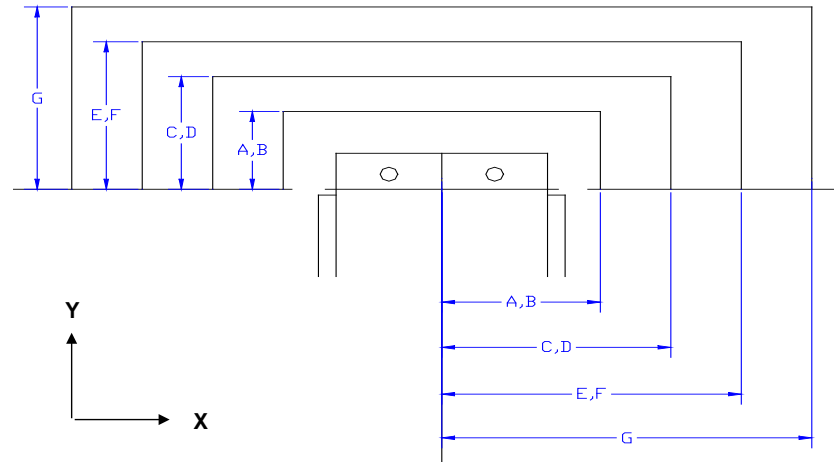
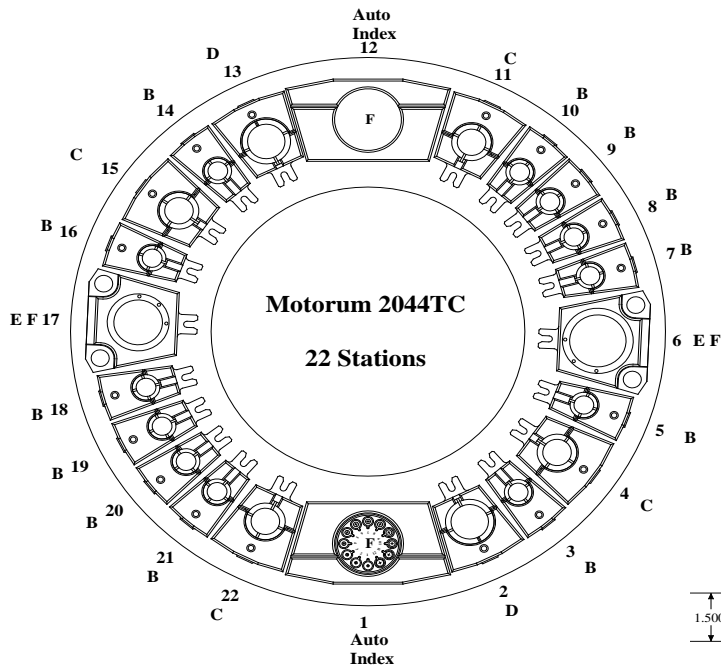


Max Station Range Act. Station Range No. of Stations	A	B	CD		EF		G	VariTool Auto Index	
			C	D	E	F		F Sta. AI, VT Ready	VARITOOL
	0	12	4	2	1	1	0	2	0
Round/Obround	.5" & Under	1" & Under	Over 1" to 1.500"	Over 1-1.5" to 2.00"	Over 2.00" to 2.500"	Over 2.50" to 3.00"	Over 3.00" to 3.500"	3.00" Max. Diagonal	12 Station 1/2" Maximum Diameter or Diagonal
Square	N/A	.625" & Under	Over .625" to .875"	Over .875" to 1.250"	Over 1.250" to 1.625"	Over 1.625" to 2.00"	Over 2.000" to 2.250"		
Rectangle	N/A	1.000" Max Across Corners	1.500" Max Across Corners	2.000" Max Across Corners	2.500" Max Across Corners	3.000" Max Across Corners	3.500" Max Across Corners		
Punch Holder O. D.	2.250"	2.250"	3.125"	3.375"	4.562"	4.562"	5.938"	4.172"	4.172"
Die Holder I. D.	1.562"	1.562"	2.250"	2.750"	3.500"	4.000"	4.500"	4.000"	N/A



Safety Zones:	X	Y	(US) Tonnage Limits:
AB	+/-2.756"	1.575"	Machine: 22
CD	+/-3.307"	2.126"	Auto Index: 16.5
EF	+/-3.898"	2.717"	Vari-Tool: 5
G	+/-4.606"	3.425"	

Load Position: X49.213 Y50.394 M30
 Over Travel: X = +/- 0.787" (20mm)
 Y = + 1.968" (50mm)
 Y = - 0.197" (5mm)

Throat Depth: 51.181" (1300mm)

With Stubby Work Holders you gain 9.843" in material capacity. (250mm)
 Part # P63-23001-10

