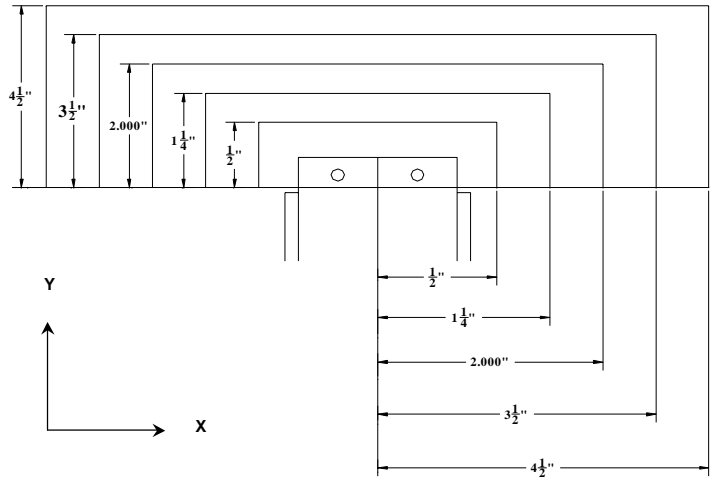
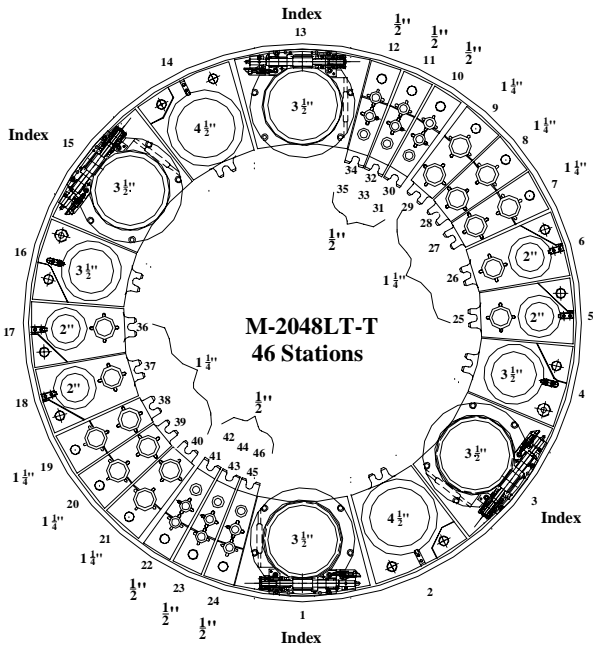


Max Station Range	1/2" Round Only	1/2"	1 1/4"	2.00"	3 1/2"	4 1/2"	Auto Index	Multi-Tool
Act. Station Range							3 1/2"	3 1/2"
No. of Stations	6	12	16	4	2	2	4	2 Possible
Round/Obround	.5" & Under	.5" & Under	.501" to 1.250"	1.251" to 2.00"	2.001" to 3.500"	3.501" to 4.500"	2.001" to 3.500"	
Square	N/A	0.500" Across Corners	1.250" Across Corners	2.000" Across Corners	3.500" Across Corners	4.500" Across Corners	3.500" Across Corners	
Rectangle	N/A	0.500" Across Corners	1.250" Across Corners	2.000" Across Corners	3.500" Across Corners	4.500" Across Corners	3.500" Across Corners	
Punch Holder O.D.	1.019"	1.019"	1.883"	2.750"	4.374"	5.250"		
Die Holder I.D.	1.000"	1.000"	1.875"	3.500"	4.938"	6.250"		

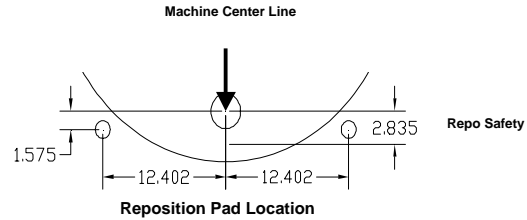


Safety Zones:	X	Y	(US) Tonnage Limits:
0.500"	+/-2.125"	0.945"	Machine: 22
1.250"	+/-2.559"	1.378"	Auto Index: 16.5
2.000"	+/-2.992"	1.811"	
3.500"	+/-3.819"	2.638"	
4.500"	+/-4.252"	3.070"	
Cell Ready add +/-0.563"			

Note: The Auto Index stations can be either 1.250", 2.000", 3.500", or Multi-Tool, depending on customer requirements.

- Load Position: X98.425 Y60.748 M30 Throat Depth: 52.047" (1322mm)
- Over Travel: X = +/- 0.984" (25mm)
- Y = + 0.197" (5mm) Outer Track
- Y = - 3.150" (80mm) Outer Track
- Y = - 1.575" (40mm) Middle Track
- Y = 0.0" (Zero) Inner Track

T29 is reserved for separating parts for the unload chute.
 Maximum size for part chute : X7.87", Y3.94"
 Minimum size for part chute : X1.18", Y3.15"
 M58 Opens the chute. M59 Closes the chute



M2048LT-T Turret Layout