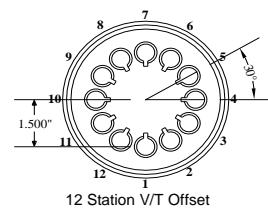
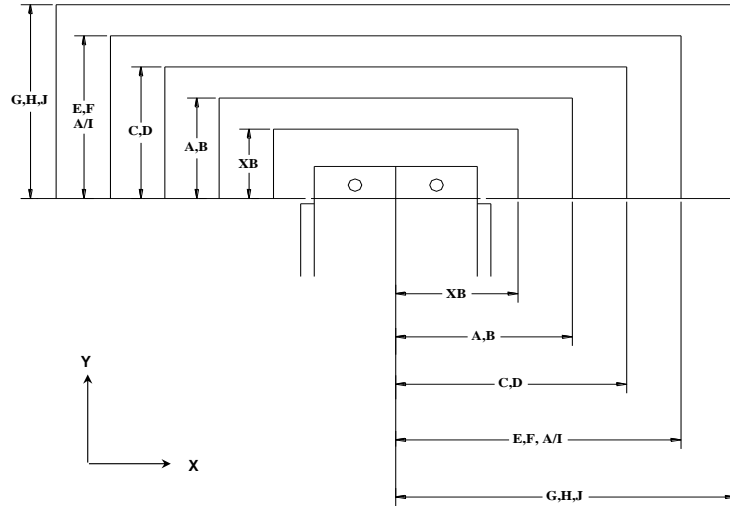
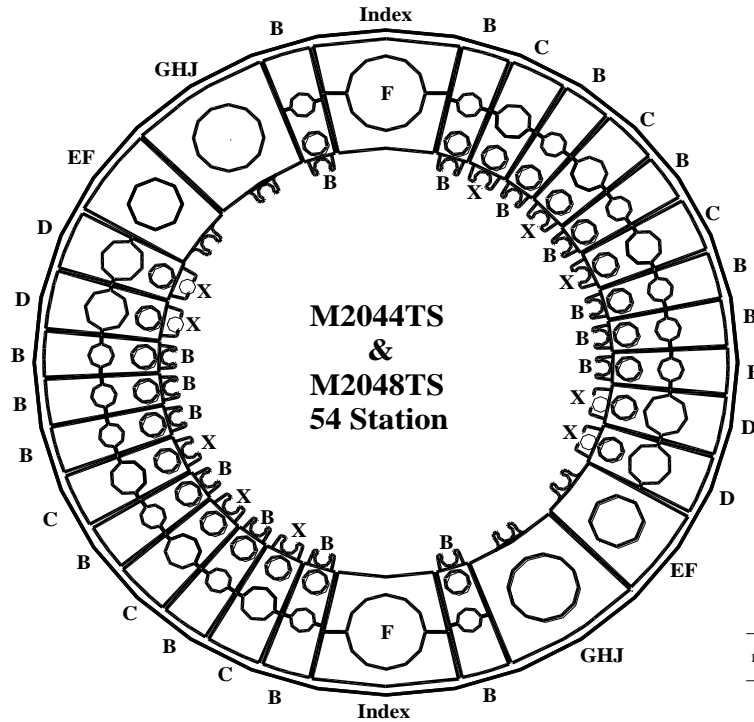


Max Station Range Act. Station Range No. of Stations	X	B	C	D	EF		GHJ			VariTool Auto Index	
					E	F	G	H (114)	J (114)	A/I, V/T Ready	VARITOOL
Round/Obround	0.500" & Under	1.000" & Under	Over 1.000" to 1.500"	Over 1.500" to 2.00"	Over 2.000" to 2.500"	Over 2.500" to 3.000"	Over 3.000" to 3.500"	Over 3.500" to 4.125"	Over 4.125" to 4.750"	3.00" Max. Diagonal	12 Station 1/2" Maximum Diameter or Diagonal
Square	N/A	0.625" & Under	Over 0.625" to 0.875"	Over .875" to 1.250"	Over 1.250" to 1.625"	Over 1.625" to 2.00"	Over 2.000" to 2.250"	Over 2.250" to 2.750"	Over 2.750" to 3.125"		
Rectangle	N/A	1.000" Max Across Corners	1.500" Max Across Corners	2.000" Max Across Corners	2.500" Max Across Corners	3.000" Max Across Corners	3.500" Max Across Corners	4.125" Max Across Corners	4.750" Max Across Corners		
Punch Holder O.D.	1.692"	2.250"	3.125"	3.375"	4.562"	4.562"	5.938"	5.938"	5.938"	4.172"	4.172"
Die Holder I.D.	1.562"	1.562"	2.250"	2.750"	3.500"	4.000"	4.500"	5.250"	6.000"	4.000"	N/A



Safety Zones:	X	Y	(US) Tonnage Limits:
XB	+/-2.756"	1.575"	Machine: 22
AB	+/-2.756"	1.575"	Auto Index: 16.5
CD	+/-3.307"	2.126"	Vari-Tool: 5
EF	+/-3.898"	2.717"	
GHJ	+/-4.606"	3.425"	
Cell Ready add +/- .563"			

Load Position: X49.213 Y49.213 M30 (M2044TS)  
 X98.425 Y49.213 M30 (M2048TS)

Throat Depth: 52.756" (1340mm)

Travel Range: Minimum Maximum  
 X -0.984 50.197 (M2044TS)  
 X -0.984 99.409 (M2048TS)  
 Y 0.000 50.788 (Inner Track)  
 Y -2.756 50.788 (Outer Track)

