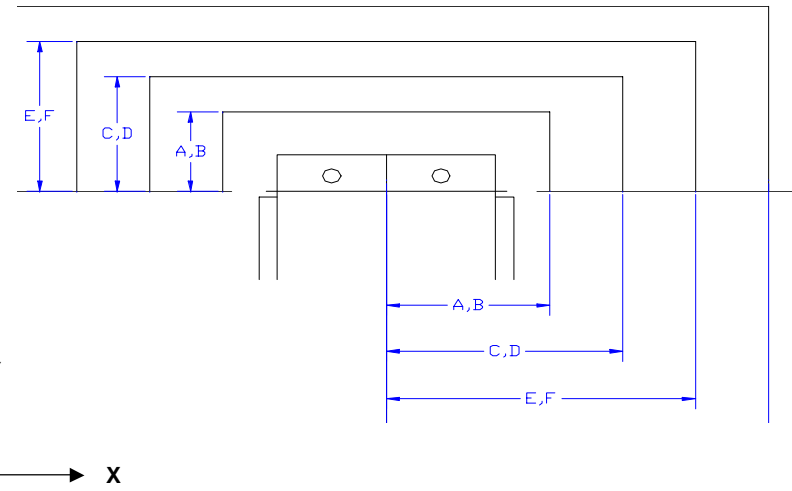
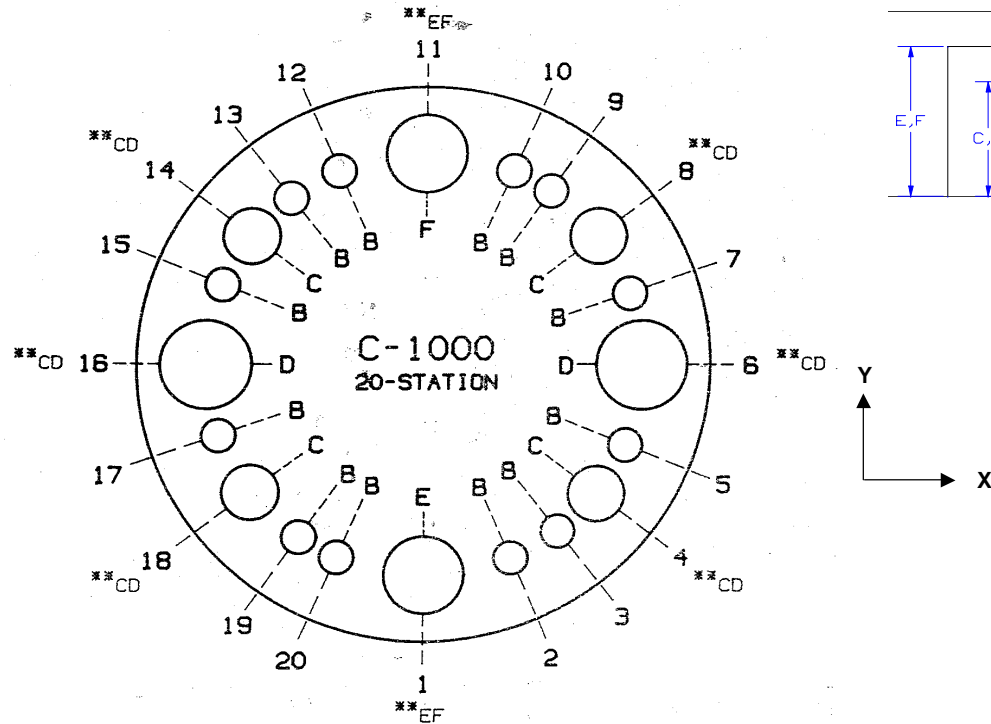


Max Station Range	A	B	CD		EF	
Act. Station Range			C	D	E	F
No. of Stations	0	12	3	3	1	1
Round/Obround	.5" & Under	1" & Under	Over 1" to 1.500"	Over 1-1.5" to 2.00"	Over 2.00" to 2.500"	Over 2.50" to 3.00"
Square	N/A	.625" & Under	Over .625" to .875"	Over .875" to 1.250"	Over 1.250" to 1.625"	Over 1.625" to 2.00"
Rectangle	N/A	.875" Max Across Corners	1.219" Max Across Corners	1.750" Max Across Corners	2.250" Max Across Corners	2.875" Max Across Corners
Punch Holder O. D.	2.125"	2.125"	3.125"	3.125"	4.562"	4.562"
Die Holder I. D.	1.562"	1.562"	2.250"	2.750"	3.500"	4.000"



Load Position: X39.370 Y39.370 M30
 Over Travel: X = +/- 0.787" (20mm)
 Y = +/- 0.787" (20mm)

Throat Depth: 41.339" (1050mm)
 Machine Weight: 13,400 Lbs. (6100kg)

Fanuc Controls

Safety Zones:	X	Y	(US) Tonnage Limits:	
AB	3.150"	1.654"	Machine:	16.5
CD	3.661"	2.244"	Auto Index:	N/A
EF	4.252"	2.835"	Vari-Tool:	N/A