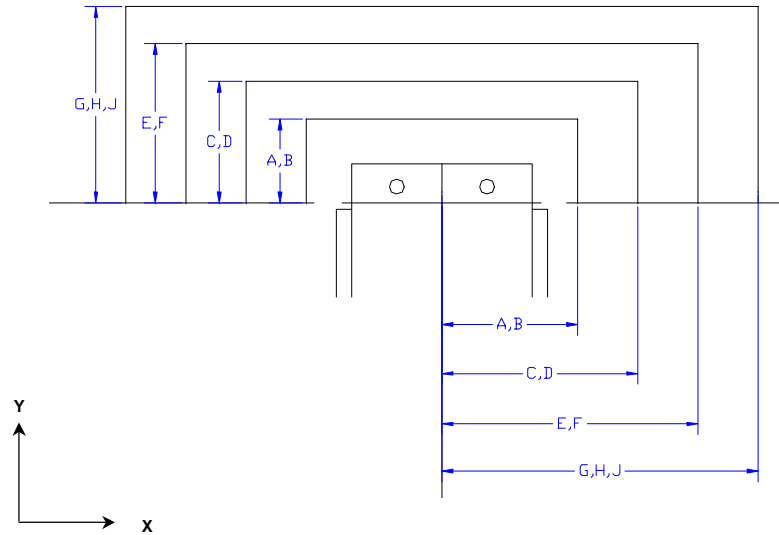
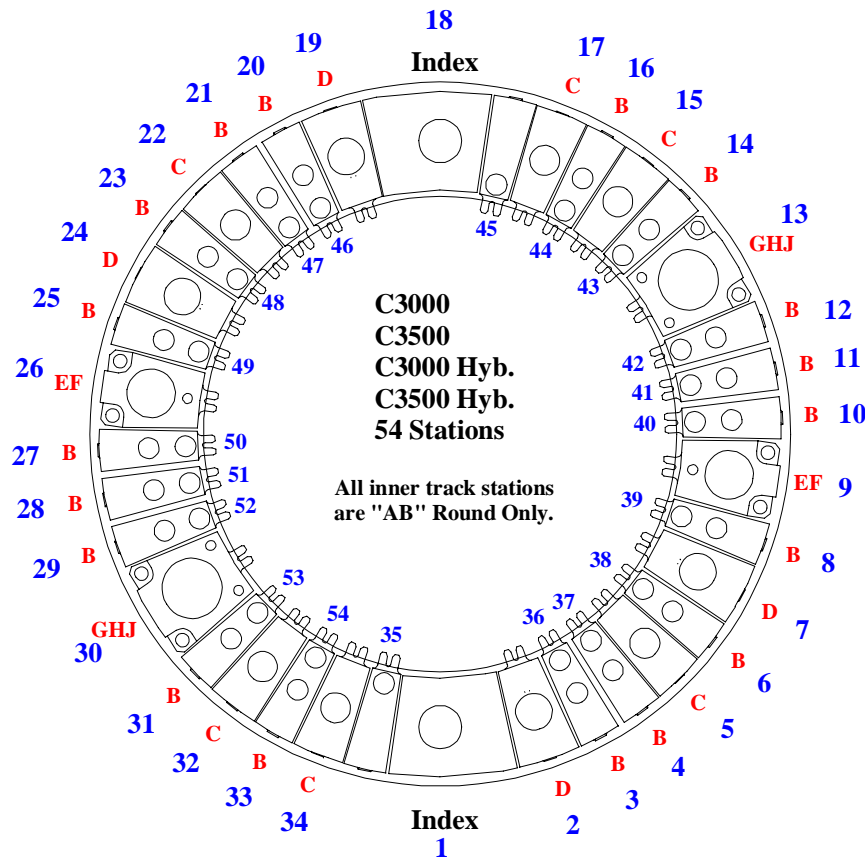


Max Station Range	AB	B	C	D	EF		GHJ			Auto Index	Vari Station A/I		
Act. Station Range					E	F	G	H (114)	J (114)	D	A/I	V/T (F)	A/I (F)*
No. of Stations	20	18	6	4	1	1	1	1	0	2	N/A	N/A	N/A
Round/Oround	1.000" & Under	1.000" & Under	Over 1.000" to 1.500"	Over 1.500" to 2.00"	Over 2.000" to 2.500"	Over 2.500" to 3.000"	Over 3.000" to 3.500"	Over 3.500" to 4.125"	Over 4.125" to 4.750"	Over 1.500" to 2.00"	Over 1.500" to 2.00"	12 Station 1/2" Max. Diameter or Diagonal	Over 2.500" to 3.000"
Square	N/A	0.625" & Under	Over 0.625" to 0.875"	Over .875" to 1.250"	Over 1.250" to 1.625"	Over 1.625" to 2.00"	Over 2.000" to 2.250"	Over 2.250" to 2.750"	Over 2.750" to 3.125"	Over .875" to 1.250"	Over .875" to 1.250"		Over 1.625" to 2.00"
Rectangle	N/A	0.875" Max Across Corners	1.219" Max Across Corners	1.750" Max Across Corners	2.250" Max Across Corners	2.625" Max Across Corners	3.125" Max Across Corners	3.875" Max Across Corners	4.437" Max Across Corners	1.750" Max Across Corners	1.750" Max Across Corners		2.625" Max Across Corners
Punch Holder O.D.	2.250"	2.250"	3.125"	3.375"	4.562"	4.562"	5.938"	5.938"	5.938"	3.375"	4.172"	4.172"	4.562"
Die Holder I.D.	1.562"	1.562"	2.250"	2.750"	3.500"	4.000"	4.500"	5.250"	6.000"	2.750"	2.750"	N/A	4.000"



Fanuc 0-PB Control		
Safety Zones:	X	Y
AB	+/-3.898"	2.480"
CD	+/-4.449"	3.071"
EF	+/-5.394"	3.661"
GHJ	+/-6.339"	4.330"
KL	+/-7.441"	5.315"
Cell Ready add +/- .563"		

Fanuc 16-P Control		
Safety Zones:	X	Y
AB	+/-2.480"	1.299"
CD	+/-2.756"	1.575"
EF	+/-3.307"	2.126"
GHJ	+/-3.898"	2.717"
KL	+/-5.000"	3.819"
Cell Ready add +/- .563"		

* Note: "F" Station A/I was made in US only.