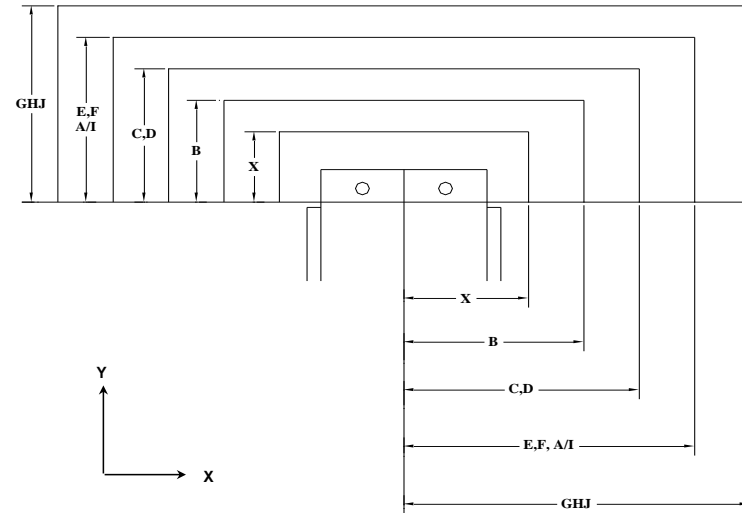
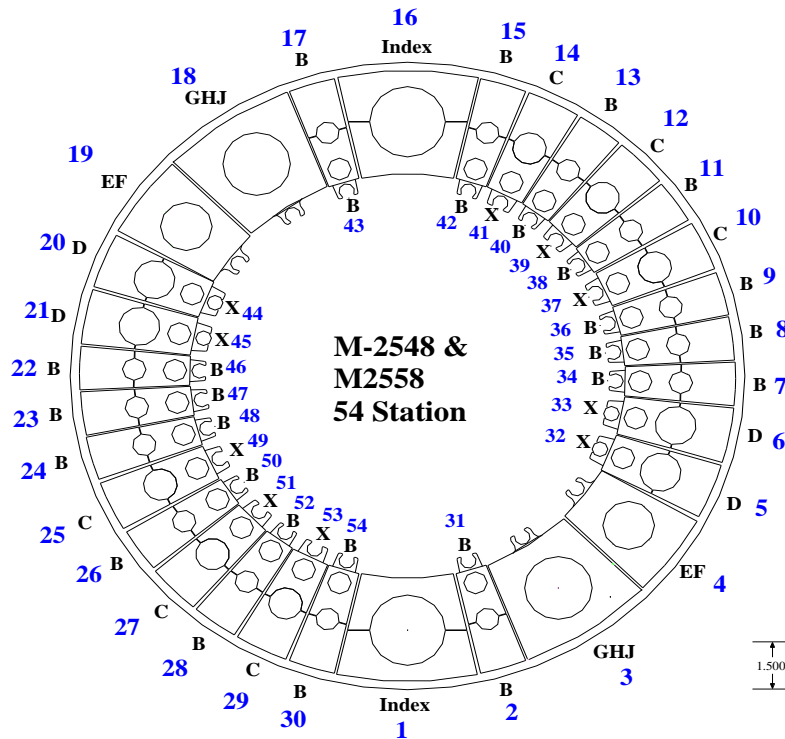


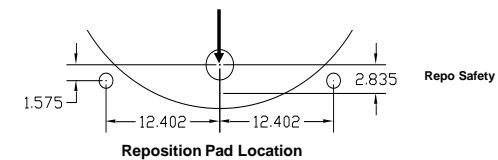
Max Station Range Act. Station Range	X	B	C	D	EF		GHJ			VariTool Auto Index	
					E	F	G	H (114)	J (114)	A/I, V/T Ready	VARITOOL
No. of Stations	10	28	6	4	1	1	1	1	0	2	0
Round/Oround	0.500" & Under	1.000" & Under	Over 1.000" to 1.500"	Over 1.500" to 2.00"	Over 2.000" to 2.500"	Over 2.500" to 3.000"	Over 3.000" to 3.500"	Over 3.500" to 4.125"	Over 4.125" to 4.750"	3.00" Max. Diameter	12 Station 1/2" Maximum Diameter
Square	N/A	0.625" & Under	Over 0.625" to 0.875"	Over .875" to 1.250"	Over 1.250" to 1.625"	Over 1.625" to 2.00"	Over 2.000" to 2.250"	Over 2.250" to 2.750"	Over 2.750" to 3.125"		
Rectangle	N/A	1.000" Max Across Corners	1.500" Max Across Corners	2.000" Max Across Corners	2.500" Max Across Corners	3.000" Max Across Corners	3.500" Max Across Corners	4.125" Max Across Corners	4.750" Max Across Corners		
Punch Holder O.D.	1.692"	2.250"	3.125"	3.375"	4.562"	4.562"	5.938"	5.938"	5.938"	4.172"	4.172"
Die Holder I.D.	1.562"	1.562"	2.250"	2.750"	3.500"	4.000"	4.500"	5.250"	6.000"	4.000"	N/A



Safety Zones:	X	Y	(US) Tonnage Limits:
X	+/-2.480"	1.299"	Machine: 27.5
B	+/-2.756"	1.575"	Auto Index: 16.5
CD	+/-3.307"	2.126"	Vari-Tool: 5
EF	+/-3.898"	2.717"	
GHJ	+/-4.606"	3.425"	
Cell Ready add +/- .563"			

T38 is reserved for separating parts for the unload chute.
 Maximum size for part chute : X7.87", Y3.94"
 Minimum size for part chute : X1.18", Y3.15"

Machine Center Line



Load Position: X98.425 Y60.039 M30 (M2548)
 X98.425 Y72.047 M30 (M2558)

Throat Depth: 52.756" (1340mm)
 Throat Depth: 63.779" (1620mm)

Travel Range: Minimum Maximum
 X -0.984 99.409
 Y 0.000 62.991 (Inner Track M2548)
 Y -2.756 60.236 (Outer Track M2548)
 Y 0.000 74.999 (Inner Track M2558)
 Y -2.756 72.244 (Outer Track M2558)