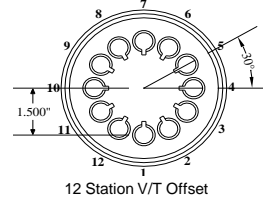
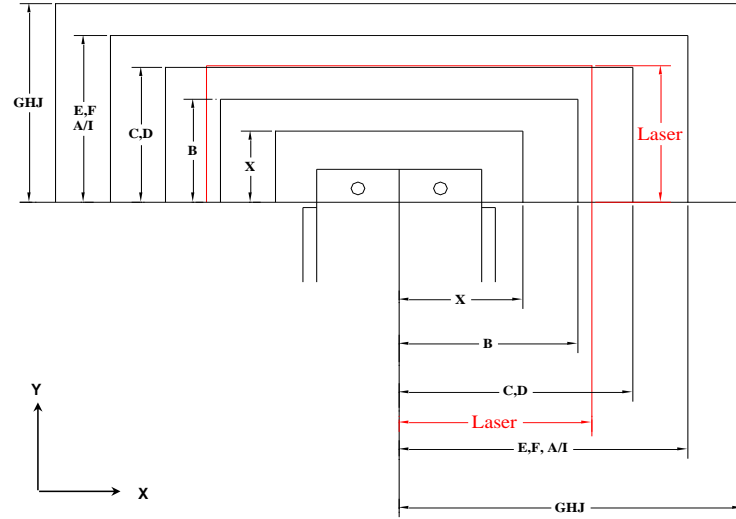
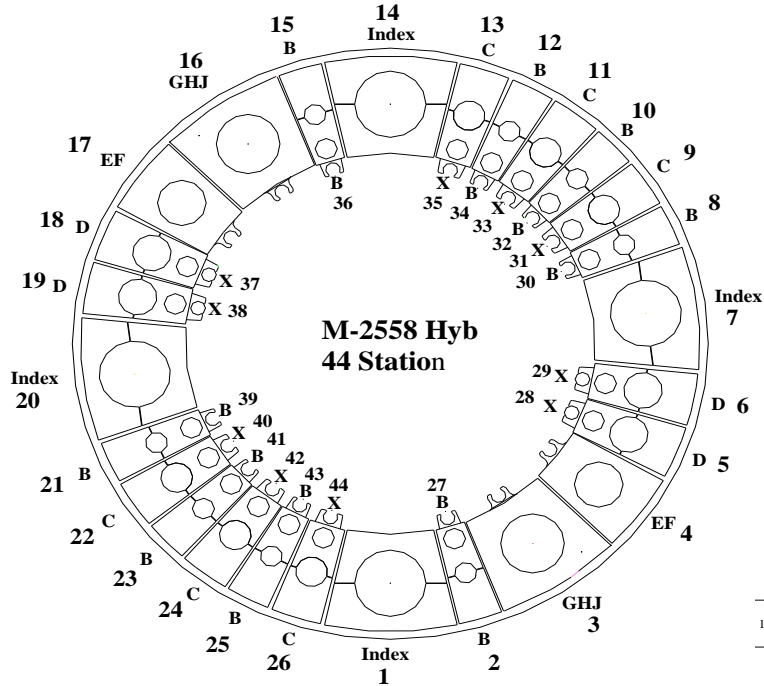


Max Station Range	X	B	C	D	EF		GHJ			VariTool Auto Index	
Act. Station Range					E	F	G	H (114)	J (114)	A/I, V/T Ready	VARITool
No. of Stations	10	16	6	4	1	1	1	1	0	4	0
Round/Oround	0.500" & Under	1.000" & Under	Over 1.000" to 1.500"	Over 1.500" to 2.00"	Over 2.000" to 2.500"	Over 2.500" to 3.000"	Over 3.000" to 3.500"	Over 3.500" to 4.125"	Over 4.125" to 4.750"	3.00" Max. Diagonal	12 Station 1/2" Maximum Diameter or Diagonal
Square	N/A	0.625" & Under	Over 0.625" to 0.875"	Over .875" to 1.250"	Over 1.250" to 1.625"	Over 1.625" to 2.00"	Over 2.000" to 2.250"	Over 2.250" to 2.750"	Over 2.750" to 3.125"		
Rectangle	N/A	1.000" Max Across Corners	1.500" Max Across Corners	2.000" Max Across Corners	2.500" Max Across Corners	3.000" Max Across Corners	3.500" Max Across Corners	4.125" Max Across Corners	4.750" Max Across Corners		
Punch Holder O.D.	1.692"	2.250"	3.125"	3.375"	4.562"	4.562"	5.938"	5.938"	5.938"	4.172"	4.172"
Die Holder I.D.	1.562"	1.562"	2.250"	2.750"	3.500"	4.000"	4.500"	5.250"	6.000"	4.000"	N/A



Safety Zones:	X	Y	(US) Tonnage Limits:
X	+/-2.480"	1.299"	Machine: 27.5
B	+/-2.756"	1.575"	Auto Index: 16.5
CD	+/-3.307"	2.126"	Vari-Tool: 5
EF	+/-3.898"	2.717"	
GHJ	+/-4.606"	3.425"	
Laser	+/-3.504"	2.677"	
Cell Ready add +/- .563"			

Load Position: X98.425 Y72.047 M30

Throat Depth: 63.779" (1620mm)

Travel Range:	Minimum	Maximum
X	-0.984	99.409
Y	0.000	74.999
(Inner track)	Y 0.000	74.999
(Outer track)	Y -2.756	72.244

Laser Location: 11.811" (300mm)
 Small parts chute: X21.654 Y9.251
 Large parts chute: X21.654 Y23.622
 Conveyor belt width: 20.63

