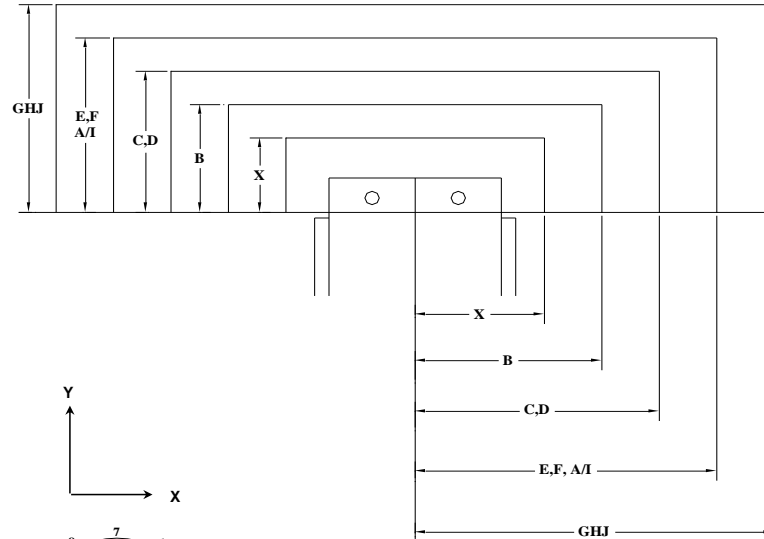
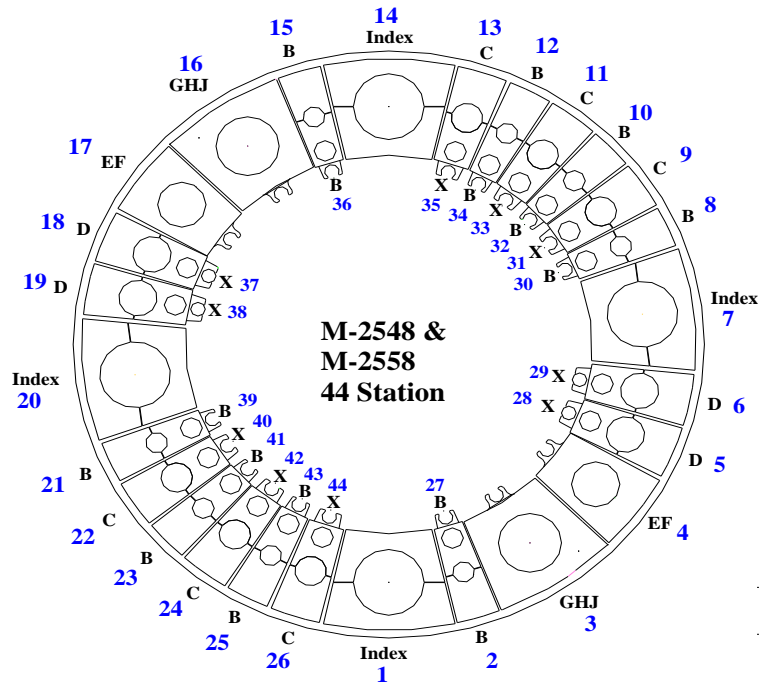


Max Station Range Act. Station Range	X	B	C	D	EF		GHJ			VariTool Auto Index	
					E	F	G	H (114)	J (114)	A/I, V/T Ready	VARITOOL
No. of Stations	10	16	6	4	1	1	1	1	0	4	0
Round/Oround	0.500" & Under	1.000" & Under	Over 1.000" to 1.500"	Over 1.500" to 2.00"	Over 2.000" to 2.500"	Over 2.500" to 3.000"	Over 3.000" to 3.500"	Over 3.500" to 4.125"	Over 4.125" to 4.750"	3.00" Max. Diagonal	12 Station 1/2" Maximum Diameter or Diagonal
Square	N/A	0.625" & Under	Over 0.625" to 0.875"	Over .875" to 1.250"	Over 1.250" to 1.625"	Over 1.625" to 2.00"	Over 2.000" to 2.250"	Over 2.250" to 2.750"	Over 2.750" to 3.125"		
Rectangle	N/A	1.000" Max Across Corners	1.500" Max Across Corners	2.000" Max Across Corners	2.500" Max Across Corners	3.000" Max Across Corners	3.500" Max Across Corners	4.125" Max Across Corners	4.750" Max Across Corners		
Punch Holder O.D.	1.692"	2.250"	3.125"	3.375"	4.562"	4.562"	5.938"	5.938"	5.938"	4.172"	4.172"
Die Holder I.D.	1.562"	1.562"	2.250"	2.750"	3.500"	4.000"	4.500"	5.250"	6.000"	4.000"	N/A



Safety Zones:	X	Y	(US) Tonnage Limits:
X	+/-2.480"	1.299"	Machine: 27.5
B	+/-2.756"	1.575"	Auto Index: 16.5
CD	+/-3.307"	2.126"	Vari-Tool: 5
EF	+/-3.898"	2.717"	
GHJ	+/-4.606"	3.425"	
Cell Ready add +/- .563"			

Load Position: X98.425 Y60.039 M30 (M2548) Throat Depth: 52.756" (1340mm)
 X98.425 Y72.047 M30 (M2558) Throat Depth: 63.779" (1620mm)

Travel Range: Minimum Maximum

X	-0.984	99.409	
Y	0.000	62.991	(Inner Track M2548)
Y	-2.756	60.236	(Outer Track M2548)
Y	0.000	74.999	(Inner Track M2558)
Y	-2.756	72.244	(Outer Track M2558)

