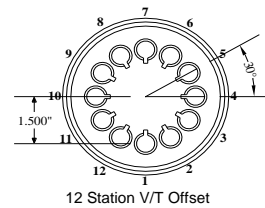
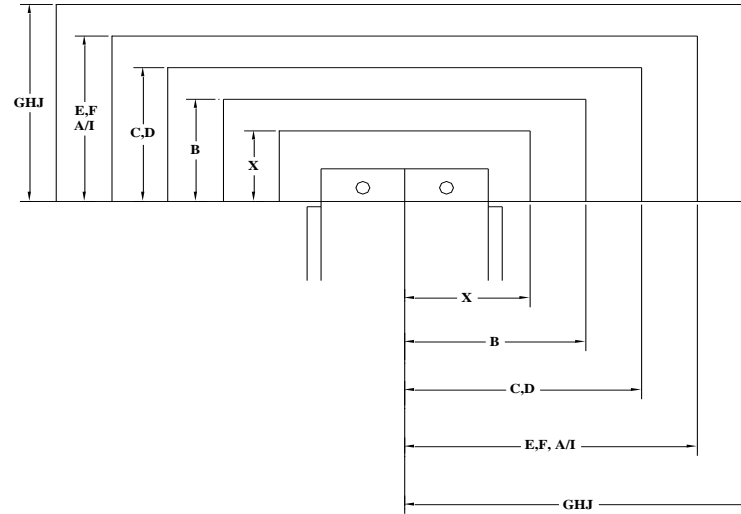
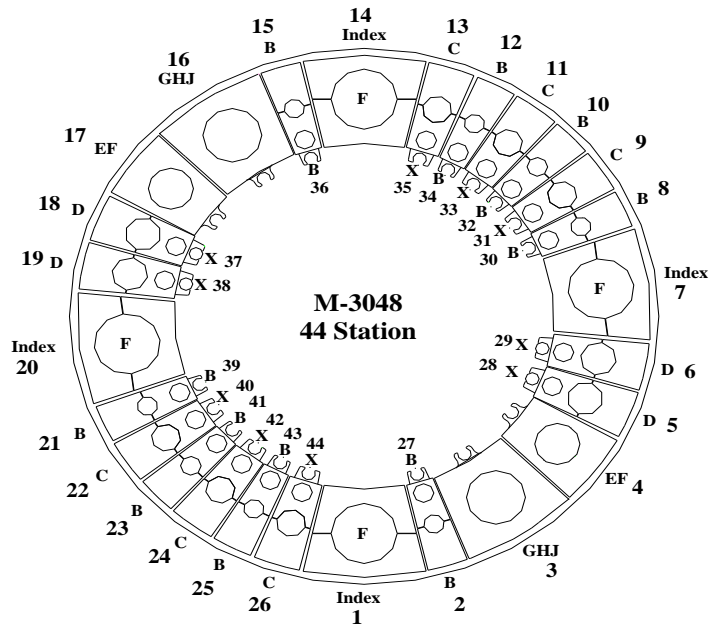


Max Station Range Act. Station Range	X	B	C	D	EF		GHJ			VariTool Auto Index	
					E	F	G	H (114)	J (114)	A/I, V/T Ready	VARITOOL
No. of Stations	10	16	6	4	1	1	1	1	0	4	0
Round/Oround	0.500" & Under	1.000" & Under	Over 1.000" to 1.500"	Over 1.500" to 2.00"	Over 2.000" to 2.500"	Over 2.500" to 3.000"	Over 3.000" to 3.500"	Over 3.500" to 4.125"	Over 4.125" to 4.750"	3.00" Max. Diagonal	12 Station 1/2" Maximum Diameter or Diagonal
Square	N/A	0.625" & Under	Over 0.625" to 0.875"	Over .875" to 1.250"	Over 1.250" to 1.625"	Over 1.625" to 2.00"	Over 2.000" to 2.250"	Over 2.250" to 2.750"	Over 2.750" to 3.125"		
Rectangle	N/A	1.000" Max Across Corners	1.500" Max Across Corners	2.000" Max Across Corners	2.500" Max Across Corners	3.000" Max Across Corners	3.500" Max Across Corners	4.125" Max Across Corners	4.750" Max Across Corners		
Punch Holder O.D.	1.692"	2.250"	3.125"	3.375"	4.562"	4.562"	5.938"	5.938"	5.938"	4.172"	4.172"
Die Holder I.D.	1.562"	1.562"	2.250"	2.750"	3.500"	4.000"	4.500"	5.250"	6.000"	4.000"	N/A



Safety Zones:	X	Y	(US) Tonnage Limits:	
X	+/-3.043"	1.299"	Machine:	33
B	+/-3.319"	1.575"	Auto Index:	16.5
CD	+/-3.870"	2.126"	Vari-Tool:	5
EF	+/-4.461"	2.717"		
GHJ	+/-5.169"	3.425"		

Cell Ready adds +/- .563". (With touch switches) The above X #'s include the cell ready option.

Load Position: X98.425 Y49.213 M30

Throat Depth: 52.756" (1340mm)

Travel Range:	Minimum	Maximum	
X	-1.574	100	
Y	0.000	53.543	(Inner Track)
Y	-2.756	50.787	(Outer Track)

Indexing Multi-tool travel range:  
X & Y: +/-0.074"

