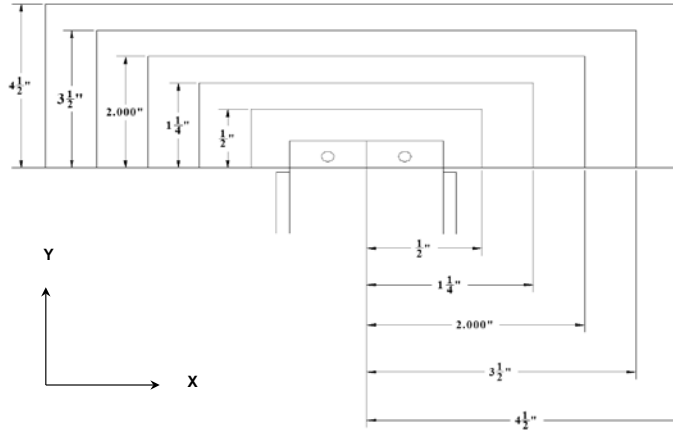
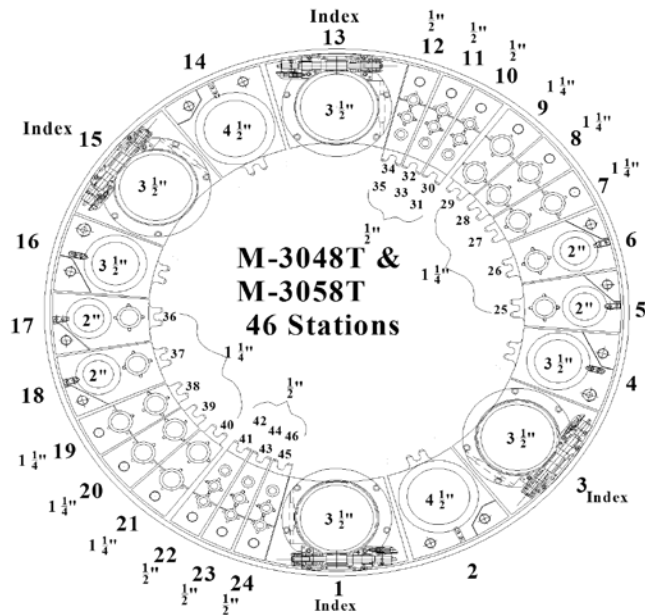


Max Station Range	1/2" Round Only	1/2"	1 1/4"	2.00"	3 1/2"	4 1/2"	Auto Index	Multi-Tool
Act. Station Range							3 1/2"	3 1/2"
No. of Stations	6	12	16	4	2	2	4	2 Possible
Round/Oround	.5" & Under	.5" & Under	.501" to 1.250"	1.251" to 2.00"	2.001" to 3.500"	3.501" to 4.500"	2.001" to 3.500"	
Square	N/A	0.500" Across Corners	1.250" Across Corners	2.000" Across Corners	3.500" Across Corners	4.500" Across Corners	3.500" Across Corners	
Rectangle	N/A	0.500" Across Corners	1.250" Across Corners	2.000" Across Corners	3.500" Across Corners	4.500" Across Corners	3.500" Across Corners	
Punch Holder O.D.	1.019"	1.019"	1.883"	2.750"	4.374"	5.250"		
Die Holder I.D.	1.000"	1.000"	1.875"	3.500"	4.938"	6.250"		



Safety Zones:	X	Y	(US) Tonnage Limits:
0.500"	+/-2.689"	0.945"	Machine: 33.7
1.250"	+/-3.122"	1.378"	Auto Index: 16.5
2.000"	+/-3.555"	1.811"	
3.500"	+/-4.381"	2.638"	
4.500"	+/-4.815"	3.070"	

Cell Ready adds +/- .563". (With touch switches)
The above X #'s include the cell ready option.

Note: The Auto Index stations can be either 1.250", 2.000", 3.500", or Multi-Tool, depending on customer requirements.

Load Position: X98.425 Y49.921 M30 (M3048TG)
X98.425 Y60.748 M30 (M3058TG)

Over Travel: X = +/- 0.984" (25mm)
Y = + 0.197" (5mm) Outer Track
Y = - 3.150" (80mm) Outer Track
Y = - 1.575" (40mm) Middle Track
Y = 0.0" (Zero) Inner Track

Throat Depth: 52.756" (1340mm)
Throat Depth: 63.779" (1620mm)

