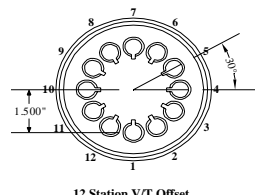
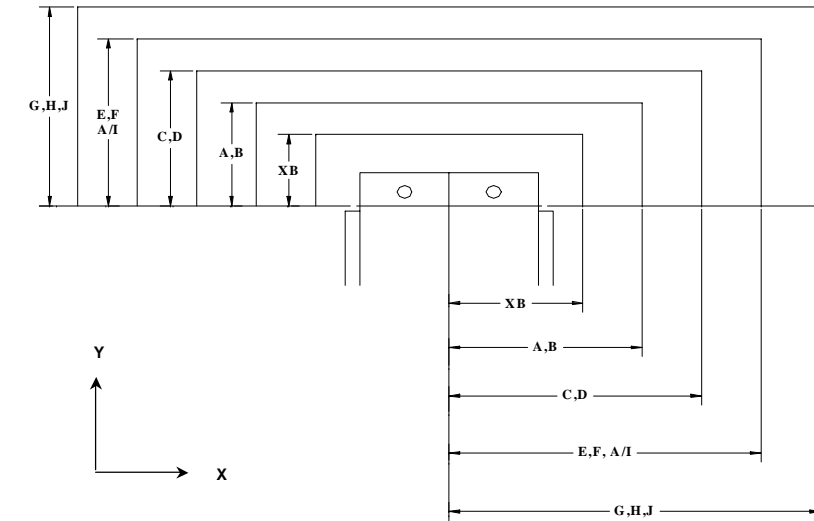
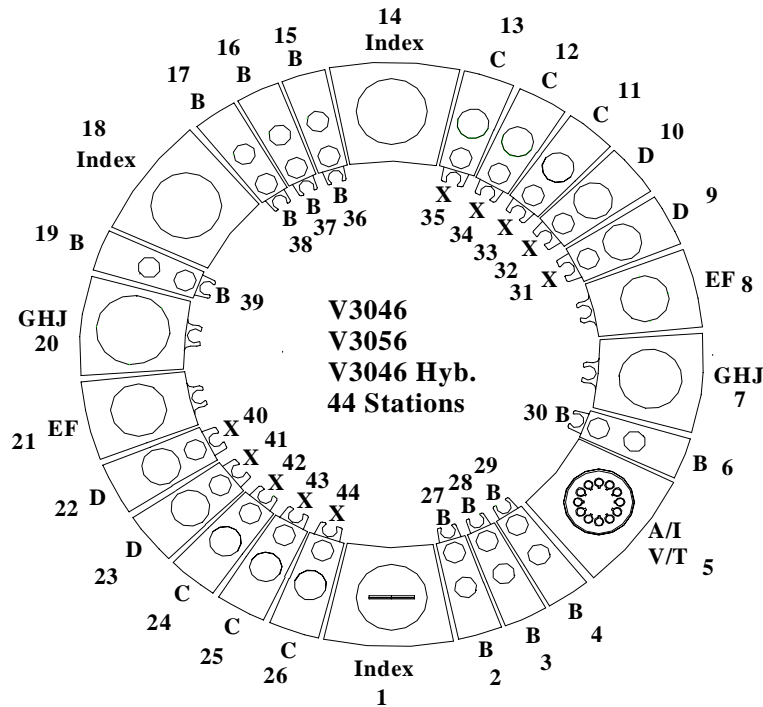


Max Station Range	VariTool Auto Index										
	X	B	C	D	EF		GHJ		A/I, V/T Ready	VARITOOL	
Act. Station Range											
No. of Stations	10	16	6	4	1	1	1	1	0	3	1
Round/Obround	0.500" & Under	1.000" & Under	Over 1.000" to 1.500"	Over 1.500" to 2.00"	Over 2.000" to 2.500"	Over 2.500" to 3.000"	Over 3.000" to 3.500"	Over 3.500" to 4.125"	Over 4.125" to 4.750"	3.00" Max. Diagonal	12 Station 1/2" Maximum Diameter or Diagonal
Square	N/A	0.625" & Under	Over 0.625" to 0.875"	Over .875" to 1.250"	Over 1.250" to 1.625"	Over 1.625" to 2.00"	Over 2.000" to 2.250"	Over 250" to 2.750"	Over 2.750" to 3.125"		
Rectangle	N/A	0.875" Max Across Corners	1.219" Max Across Corners	1.750" Max Across Corners	2.250" Max Across Corners	2.625" Max Across Corners	3.125" Max Across Corners	3.875" Max Across Corners	4.437" Max Across Corners		
Punch Holder O.D.	1.692"	2.250"	3.125"	3.375"	4.562"	4.562"	5.938"	5.938"	5.938"	4.172"	4.172"
Die Holder I.D.	1.562"	1.562"	2.250"	2.750"	3.500"	4.000"	4.500"	5.250"	6.000"	4.000"	N/A



Safety Zones:	X	Y	(US) Tonnage Limits:	
XB	+/-2.480"	1.299"	Machine:	33
AB	+/-2.756"	1.575"	Auto Index:	16.5
CD	+/-3.307"	2.126"	Vari-Tool:	5
EF	+/-3.898"	2.717"		
GHJ	+/-4.606"	3.425"		
Cell Ready add	+/--.563"			

Note: Station #'s 1, 5 14 and 18 can be either standard Auto Index or Vari-Tool depending on customer requirements.

Load Position: X78.740 Y60.039 M30 (V3046) Throat depth: 53.150" (1350mm)
 X78.740 Y72.047 M30 (V3056) Throat depth: 63.780" (1620mm)
 Over Travel: X = +/- 0.984" (25mm)
 Y = + 0.118" (3mm) (Outer Track) (0.787" (20mm) V3056)
 Y = - 2.756" (70mm) Dist. between inner & outer track (Outer track)
 Y = + 2.874" (73mm) Dist. between inner & outer track, plus 3mm (Inner track)
 Y = - 0 (Zero) Inner track

