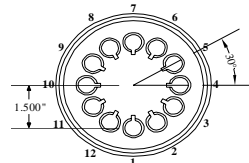
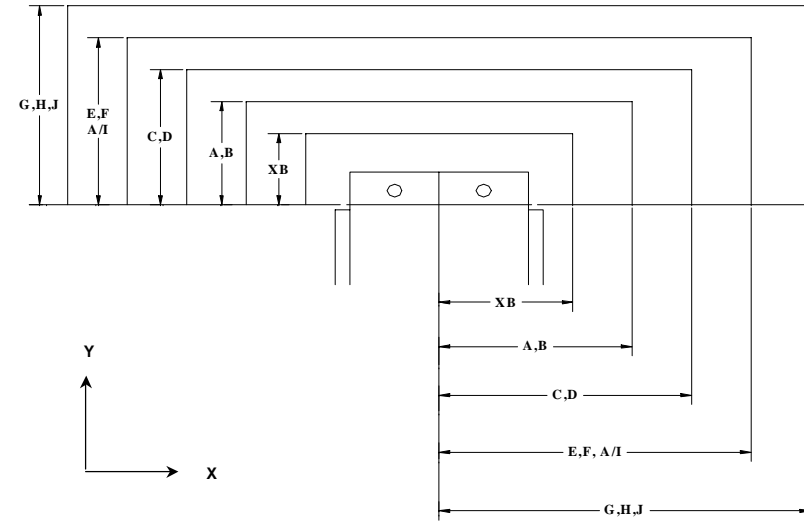
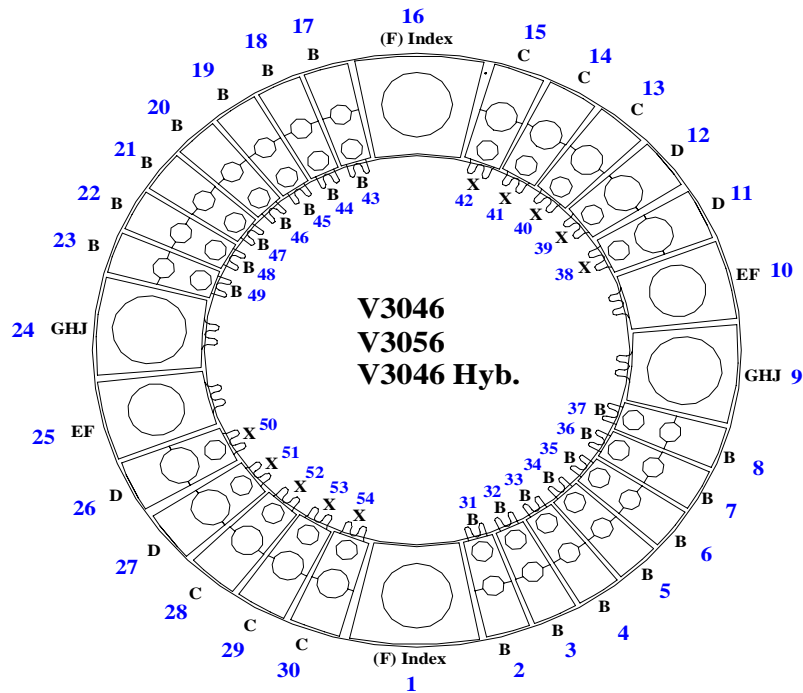


Max Station Range	X	B	C	D	EF		GHJ			VariTool Auto Index	
					E	F	G	H (114)	J (114)	A/I, V/T Ready	VARITOOL
Act. Station Range					1	1	1	1	0	2	0
No. of Stations	10	28	6	4	1	1	1	1	0	2	0
Round/Oround	0.500" & Under	1.000" & Under	Over 1.000" to 1.500"	Over 1.500" to 2.00"	Over 2.000" to 2.500"	Over 2.500" to 3.000"	Over 3.000" to 3.500"	Over 3.500" to 4.125"	Over 4.125" to 4.750"	3.00" Max. Diagonal	12 Station 1/2" Maximum Diameter or Diagonal
Square	N/A	0.625" & Under	Over 0.625" to 0.875"	Over .875" to 1.250"	Over 1.250" to 1.625"	Over 1.625" to 2.00"	Over 2.000" to 2.250"	Over 2.250" to 2.750"	Over 2.750" to 3.125"		
Rectangle	N/A	0.875" Max Across Corners	1.219" Max Across Corners	1.750" Max Across Corners	2.250" Max Across Corners	2.625" Max Across Corners	3.125" Max Across Corners	3.875" Max Across Corners	4.437" Max Across Corners		
Punch Holder O.D.	1.692"	2.250"	3.125"	3.375"	4.562"	4.562"	5.938"	5.938"	5.938"	4.172"	4.172"
Die Holder I.D.	1.562"	1.562"	2.250"	2.750"	3.500"	4.000"	4.500"	5.250"	6.000"	4.000"	N/A



Safety Zones:	X	Y	(US) Tonnage Limits:	
XB	+/-2.480"	1.299"	Machine:	33
AB	+/-2.756"	1.575"	Auto Index:	16.5
CD	+/-3.307"	2.126"	Vari-Tool:	5
EF	+/-3.898"	2.717"		
G	+/-4.606"	3.425"		
Cell Ready add +/- .563"				

Note: Station #'s 1 and 16 can be either standard Auto Index or Vari-Tool depending on customer requirements.

Load Position: X78.740 Y60.039 M30 (V3046) Throat depth: 53.150" (1350mm)
 X78.740 Y72.047 M30 (V3056) Throat depth: 63.780" (1620mm)
 Over Travel: X = +/- 0.984" (25mm)
 Y = + 0.118" (3mm) (Outer Track) (0.787" (20mm) V3056)
 Y = - 2.756" (70mm) Dist. between inner & outer track (Outer track)
 Y = + 2.874" (73mm) Dist. between inner & outer track, plus 3mm (Inner track)
 Y = - 0 (Zero) Inner track

