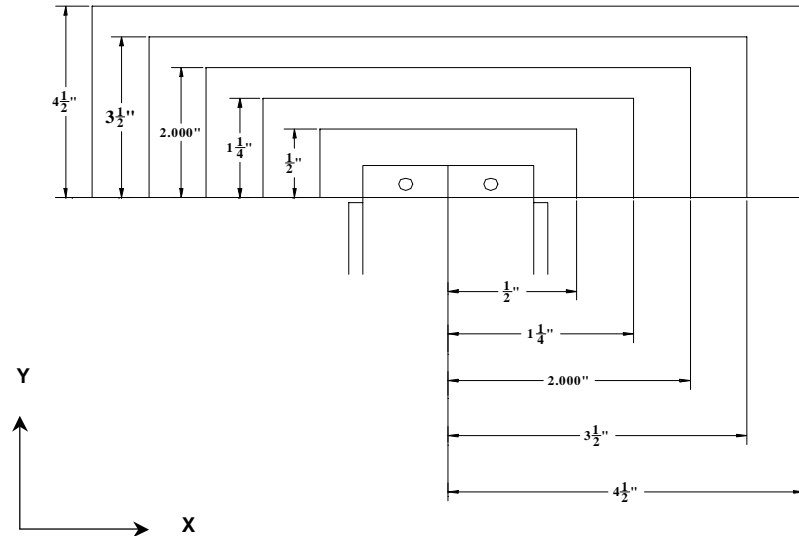
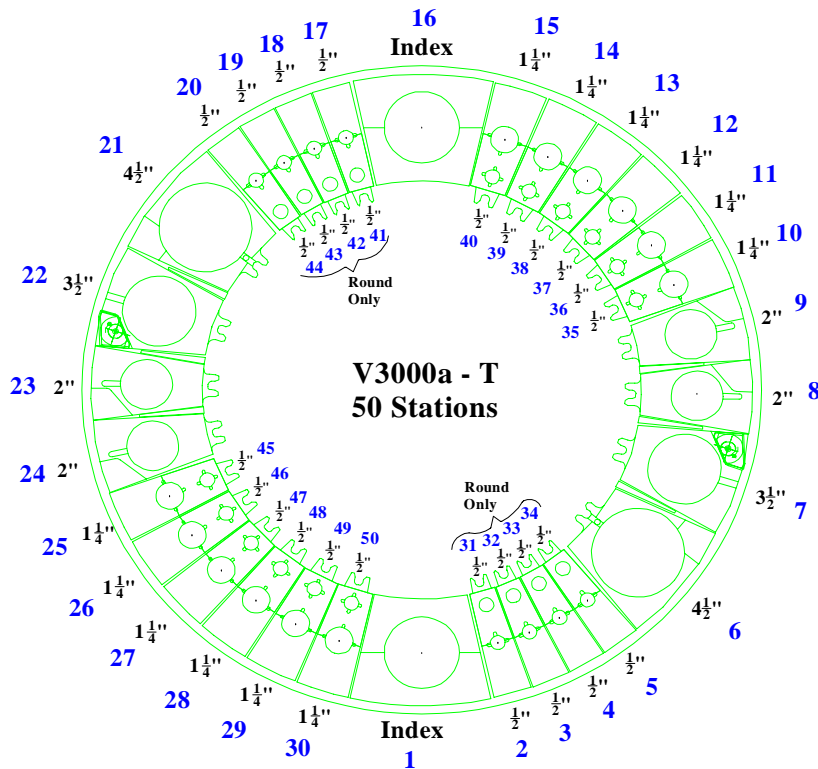


Max Station Range	1/2" Round Only	1/2"	1 1/4"	2.00"	3 1/2"	4 1/2"	Auto Index	
							1 1/4"	2.000"
Act. Station Range								
No. of Stations	8	20	12	4	2	2	0	2
Round/Obround	.500" Rnd. ONLY	.5" & Under	.501" to 1.250"	1.251" to 2.00"	2.001" to 3.500"	3.501" to 4.500"	.501" to 1.250"	1.251" to 2.00"
Square	N/A	0.353"	0.883"	1.414"	2.474"	3.125"	0.883"	1.414"
Rectangle	N/A	0.500" Across Corners	1.250" Across Corners	2.000" Across Corners	3.500" Across Corners	4.500" Across Corners	1.250" Across Corners	2.000" Across Corners
Punch Holder O.D.	1.019"	1.019"	1.883"	2.750"	4.374"	5.250"	1.883"	2.750"
Die Holder I.D.	1.000"	1.000"	1.875"	3.500"	4.938"	6.250"	1.875"	3.500"



Safety Zones:	X	Y	(US) Tonnage Limits
0.500"	+/-2.125"	0.945"	Machine: 33
1.250"	+/-2.559"	1.378"	Auto Index: 16.5
2.000"	+/-2.992"	1.811"	Vari-Tool: N/A
3.500"	+/-3.819"	2.638"	
4.500"	+/-4.252"	3.070"	
Cell Ready add +/-0.563"			

Note: Station #'s 1 & 16 can be either 1 1/4" or 2.00"