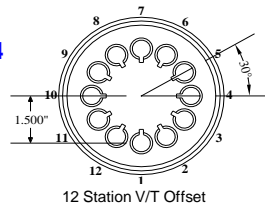
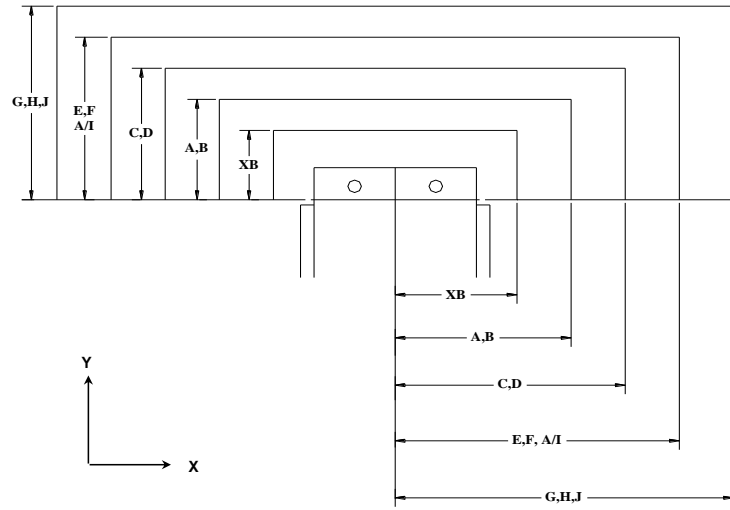
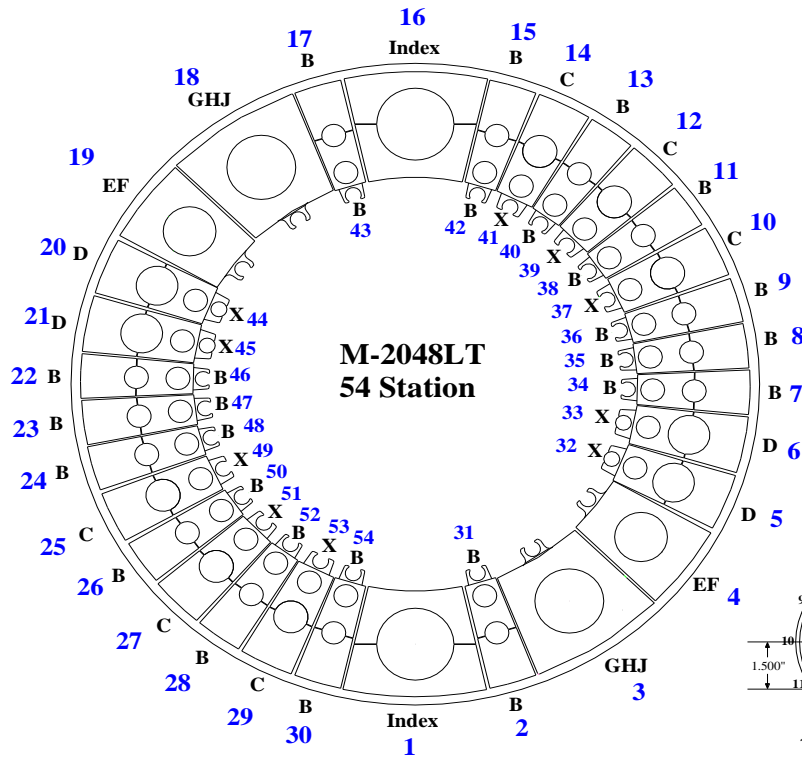


Max Station Range	X	B	C	D	EF		GHJ			VariTool Auto Index	
					E	F	G	H (114)	J (114)	A/I, V/T Ready	VARITOOL
Act. Station Range	10	28	6	4	1	1	1	1	0	2	0
No. of Stations	10	28	6	4	1	1	1	1	0	2	0
Round/Obround	0.500" & Under	1.000" & Under	Over 1.000" to 1.500"	Over 1.500" to 2.00"	Over 2.000" to 2.500"	Over 2.500" to 3.000"	Over 3.000" to 3.500"	Over 3.500" to 4.125"	Over 4.125" to 4.750"	3.00" Max. Diagonal	12 Station 1/2" Maximum Diameter or Diagonal
Square	N/A	0.625" & Under	Over 0.625" to 0.875"	Over .875" to 1.250"	Over 1.250" to 1.625"	Over 1.625" to 2.00"	Over 2.000" to 2.250"	Over 2.250" to 2.750"	Over 2.750" to 3.125"		
Rectangle	N/A	1.000" Max Across Corners	1.500" Max Across Corners	2.000" Max Across Corners	2.500" Max Across Corners	3.000" Max Across Corners	3.500" Max Across Corners	4.125" Max Across Corners	4.750" Max Across Corners		
Punch Holder O.D.	1.692"	2.250"	3.125"	3.375"	4.562"	4.562"	5.938"	5.938"	5.938"	4.172"	4.172"
Die Holder I.D.	1.562"	1.562"	2.250"	2.750"	3.500"	4.000"	4.500"	5.250"	6.000"	4.000"	N/A



Safety Zones:	X	Y	(US) Tonnage Limits:
XB	+/-2.480"	1.299"	Machine: 22
AB	+/-2.756"	1.575"	Auto Index: 16.5
CD	+/-3.307"	2.126"	Vari-Tool: 5
EF	+/-3.898"	2.717"	
GHJ	+/-4.606"	3.425"	

Cell Ready add +/- .563"

T38 is reserved for separating parts for the unload chute.  
 Maximum size for part chute : X7.87", Y3.94"  
 Minimum size for part chute : X1.18", Y3.15"

Load Position: X98.425 Y60.039 M30  
 Over Travel: X = +/- 0.984" (25mm)  
 Y = + 0.197" (5mm) (Outer Track)  
 Y = - 2.756" (70mm) Dist. between inner & outer track (Outer track)  
 Y = + 2.953" (75mm) Dist. between inner & outer track, plus 5mm (Inner track)  
 Y = - 0 (Zero) Inner track

